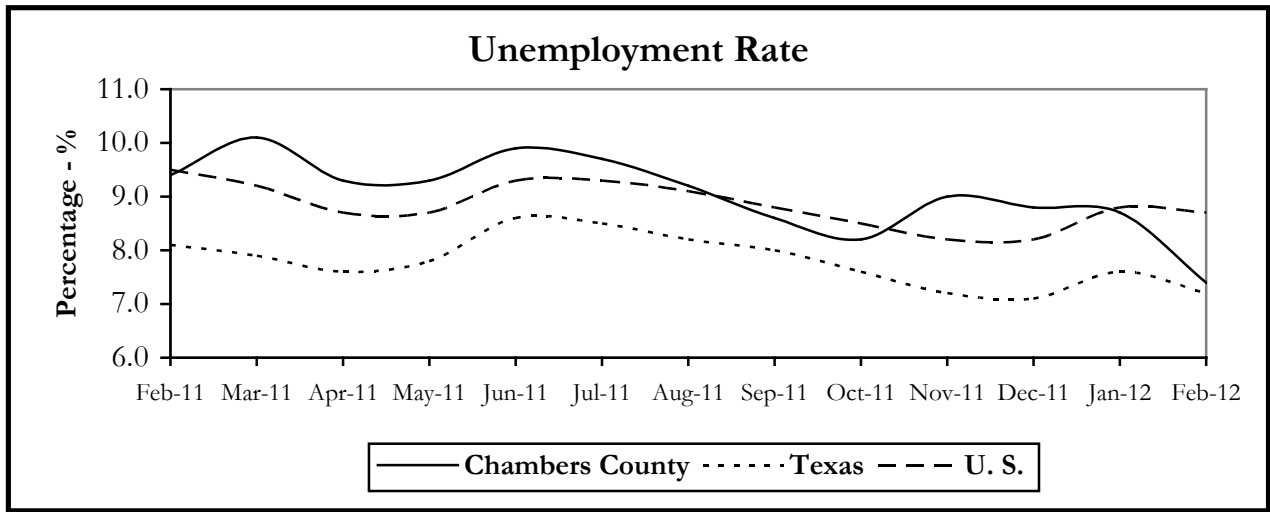


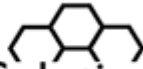
### 3<sup>rd</sup> Quarter 2011 Data

The rate of unemployment in Chambers County dropped 1.3 percentage points over the month to 7.4 percent in February 2012, considerably lower than a peak of 10.1 percent in March 2011. The unemployment rate is higher than the state's 7.2 percent rate but lower than the nation's 8.7 percent rate. Total covered employment in the county was up 66 jobs, 0.6 percent, over third quarter 2011. All of the increases were in the private sector. In the public sector, Local Government suffered a loss that was primarily seasonal in nature but some of those jobs will not be filled in the near future until budgets shortfalls improve. Total covered employment was up 1,271 jobs or 13.5 percent over the year. Most of the increase was in Natural Resources & Mining, up 235 jobs or 49.8 percent, and Construction, up 327 jobs or 73.5 percent. Strong gains were also found in Professional & Business Services, up 114 jobs or 16.3 percent, and Leisure & Hospitality, up 111 jobs or 11.7 percent. Data from Other Services was placed into Nonclassifiable, a practice used to prevent revealing information about individual establishments when one employer comprises 80 percent or more of the employment or when there are fewer than three employers in an industry group. By process of elimination we can estimate that Other Services added some 300 jobs over the year doubling employment in the industry. See page 2 for additional data.

	FEB 2012	JAN 2012	FEB 2011
<b>Civilian Labor Force</b>	17,620	17,806	17,288
<b>Total Employment</b>	16,319	16,263	15,804
<b>Unemployed</b>	1,301	1,543	1,484
<b>Unemployment Rate</b>	7.4%	8.7%	8.6%
<b>Comparative Actual Rates</b>			
<b>Texas</b>	7.2%	7.6%	8.1%
<b>U.S.</b>	8.7%	8.8%	9.5%



Estimates reflect actual (not seasonal adjusted) data. Civilian Labor Force includes wage and salary workers, self-employed, unpaid family, domestics in private households, agricultural workers, workers involved in labor disputes and the unemployed, all by place of residence. Source: Texas Workforce Commission in cooperation with the U.S. Department of Labor, Bureau of Labor Statistics. All Data Subject To Revision.

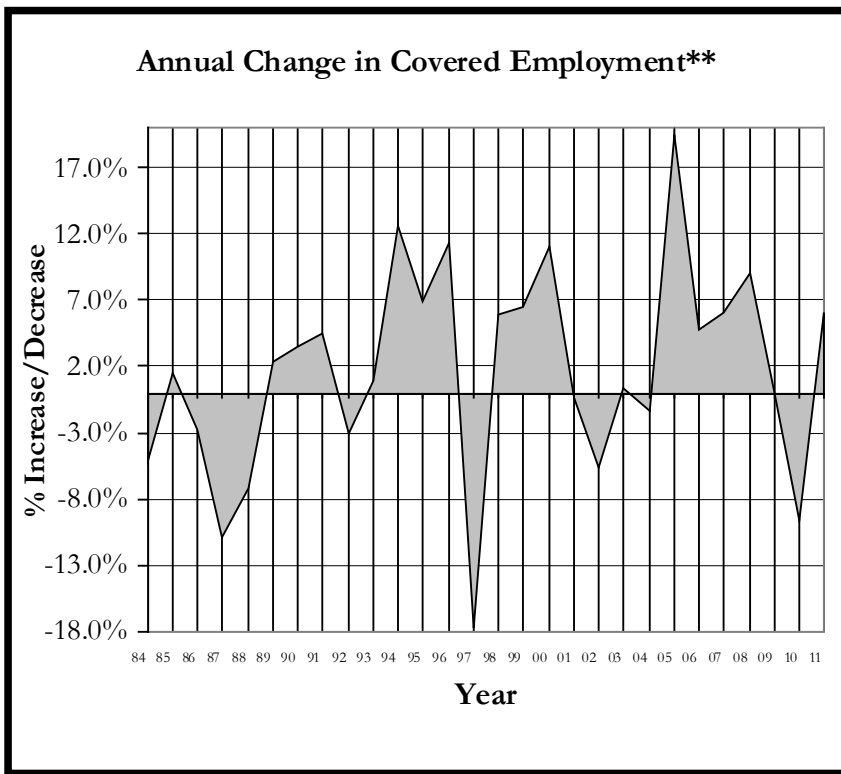
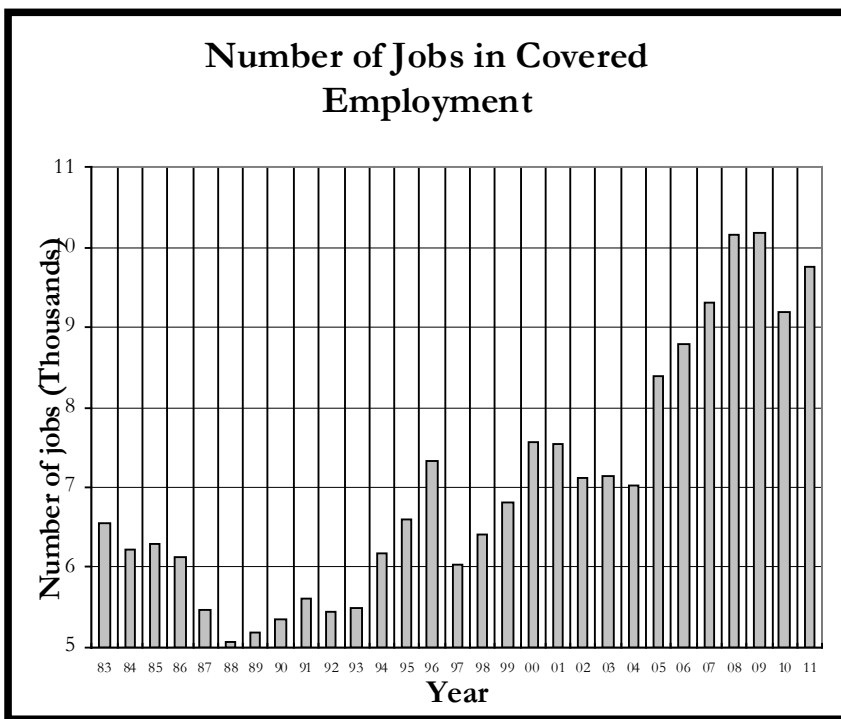


COVERED EMPLOYMENT Industrial Sector	Number of Jobs			Quarter Chg		Annual Chg		Avg Wkly Wage*
	3RD QTR 2011*	2ND QTR 2011*	3RD QTR 2010*	Actual	%	Actual	%	
<b>Total Employment</b>	10,657	10,591	9,386	66	0.6%	1,271	13.5%	\$910
<b>Natural Resources &amp; Mining</b>	707	694	472	13	1.9%	235	49.8%	\$1,327
<b>Construction</b>	772	712	445	60	8.4%	327	73.5%	\$855
<b>Manufacturing</b>	1,768	1,749	1,673	19	1.1%	95	5.7%	\$1,470
<b>Trade, Transportation, &amp; Utilities</b>	1,815	1,809	1,822	6	0.3%	-7	-0.4%	\$1,011
<b>Information</b>	----	----	----	na	na	na	na	na
<b>Financial Activities</b>	797	790	785	7	0.9%	12	1.5%	\$833
<b>Professional &amp; Business Services</b>	815	813	701	2	0.2%	114	16.3%	\$790
<b>Education &amp; Health Services</b>	429	431	394	-2	-0.5%	35	8.9%	\$479
<b>Leisure &amp; Hospitality</b>	1,063	1,100	952	-37	-3.4%	111	11.7%	\$238
<b>Other Services</b>	----	529	272	na	na	na	na	\$756
<b>Nonclassifiable</b>	652	7	16	na	na	na	na	na
<b>Public Administration</b>	1,834	1,954	1,850	-120	-6.1%	-16	-0.9%	\$725
<b>Federal Government</b>	58	59	60	-1	-1.7%	-2	-3.3%	\$1,125
<b>State Government</b>	46	48	47	-2	-4.2%	-1	-2.1%	\$775
<b>Local Government</b>	1,730	1,847	1,743	-117	-6.3%	-13	-0.7%	\$710

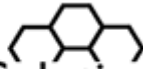
\*When one employer comprises 80% or more of the employment for an industry group in a county, or there are fewer than three employers for an industry group in a county, a dash (----) is shown and the employment for that industry is included in Nonclassified as to not reveal information about individual establishments. Wages compiled from 1st quarter 2011 contribution and wage reports submitted to the Texas Workforce Commission by employers subject to the Texas Unemployment Compensation Act. Data Source: the Texas Workforce Commission, Labor Market and Career Information Department in cooperation with the Bureau of Labor Statistics, U.S. Department of Labor.

Chambers County 1983-2011  
Covered Employment\*\*

YEAR	JOBS	+ / (-)	% +/-
83	6,545		
84	6,210	(335)	-5.1%
85	6,302	92	1.5%
86	6,124	(178)	-2.8%
87	5,456	(668)	-10.9%
88	5,063	(393)	-7.2%
89	5,181	118	2.3%
90	5,361	180	3.5%
91	5,603	242	4.5%
92	5,436	(167)	-3.0%
93	5,483	47	0.9%
94	6,173	690	12.6%
95	6,596	423	6.9%
96	7,344	748	11.3%
97	6,043	(1,301)	-17.7%
98	6,400	357	5.9%
99	6,813	413	6.5%
00	7,561	748	11.0%
01	7,534	(27)	-0.4%
02	7,107	(427)	-5.7%
03	7,126	19	0.3%
04	7,024	(102)	-1.4%
05	8,389	1,365	19.4%
06	8,791	402	4.8%
07	9,316	525	6.0%
08	10,168	852	9.1%
09	10,172	4	0.0%
10	9,200	(972)	-9.6%
11	9,763	563	6.1%



\*\*Data Compiled from 1<sup>st</sup> quarter contribution and wage reports submitted to the Texas Workforce Commission by employers subject to the Texas Unemployment Compensation Act. For more information on your particular industry, please call 832/681-2535. Date source: the Texas Workforce Commission, Labor Market and Career Information Department in cooperation with the Bureau of Labor Statistics, U.S. Department of Labor.



Workforce Solutions

# Chambers County

## Labor Market Information

Gulf Coast\*\* 2010 Wages Released July 2011, next update August 2012\*

Std. Occ Code	Occupation	Average Wage	Employment
13-2011	Accountants & Auditors	34.46	22,820
49-3023	Automotive Service Technicians and Mechanics	18.72	9,970
43-3031	Bookkeepers, Acctg and Auditing Clerks	17.65	31,290
49-3031	Bus and Truck Mechanics and Diesel Engine Specialists	19.74	4,630
53-3022	Bus Drivers, School	12.34	9,270
47-2031	Carpenters	16.57	8,810
41-2011	Cashiers	9.12	63,410
17-2051	Civil Engineer	49.61	10,230
15-1051	Computer Systems Analyst	41.31	11,980
47-2061	Construction Laborers	12.05	29,590
35-2012	Cooks, Institution and Cafeteria	10.41	8,590
35-2014	Cooks, Restaurant	9.08	17,480
43-4051	Customer Service Representatives	14.77	48,520
43-9021	Data Entry Keyers	13.35	4,770
47-2111	Electricians	22.11	13,360
43-6011	Executive Secretaries and Administrative Assistants	22.72	25,820
47-1011	First-Line Supervisors/Managers of Construction Trades and Extraction Workers	29.41	16,690
43-1011	First-Line Supervisors/Managers of Office and Administrative Support Workers	26.31	29,120
41-1011	First-Line Supervisors/Managers of Retail Sales Workers	19.66	24,140
35-2021	Food Preparation Workers	9.85	9,090
11-9051	Food Service Managers	27.91	4,090
11-1021	General and Operations Managers	57.22	43,650
49-9041	Industrial Machinery Mechanics	24.13	11,730
53-7051	Industrial Truck and Tractor Operator	13.80	9,870
37-2011	Janitors and Cleaners, Except Maids and Housekeeping Cleaners	10.06	41,000
53-7062	Laborers and Freight Stock, and Material Movers, Hand	12.55	43,070
29-2061	Licensed Practical and Licensed Vocational Nurses	20.76	12,860
11-9081	Lodging Managers	26.89	270
51-4041	Machinists	18.91	12,580
49-9042	Maintenance and Repair Workers, General	16.43	24,610
11-2021	Marketing Managers	63.81	2,660
31-1012	Nursing Aides, Orderlies, and Attendants	11.00	20,260
43-9061	Office Clerks, General	14.18	60,730
29-1051	Pharmacists	51.30	5,600
47-2152	Plumbers, Pipefitters, and Steamfitters	22.46	8,960
33-3051	Police and Sheriff's Patrol Officers	25.46	14,800
13-1023	Purchasing Agents, Except Wholesale, Retail, and Farm Products	30.12	7,010
43-4171	Receptionists and Information Clerks	12.58	15,320
29-1111	Registered Nurses	34.40	42,840
41-2031	Retail Salespersons	11.21	83,710
41-4011	Sales Representatives, Wholesale and Manufacturing, Technical and Scientific Products	38.59	7,900
43-6014	Secretaries, Except Legal, Medical, and Executive	14.77	36,780
33-9032	Security Guards	10.63	22,700
43-5071	Shipping, Receiving, and Traffic Clerks	14.02	14,670
43-5081	Stock Clerks and Order Fillers	11.37	29,740
53-3032	Truck Drivers, Heavy an Tractor-Trailer	18.23	27,800
53-3033	Truck Drivers, Light or Delivery Services	16.27	13,370
51-4121	Welders, Cutters, Solderers, and Brazers	18.78	15,730

\*Data compiled by the Texas Workforce Commission, LMCI Dept. in cooperation with the Bureau of Labor Statistics as part of the Occupational Employment Survey. Employment is the estimate of employment based upon the sample, not the sample employment. Wages for the OES survey are straight-time, gross pay, exclusive of premium pay. Base rate, cost-of-living allowances, guaranteed pay, hazardous-duty pay, incentive pay including commissions and production bonuses, tips, and on-call pay are included. Excluded are back pay, jury duty pay, overtime pay, severance pay, shift differentials, nonproduction bonuses, employer cost of supplementary benefits, and tuition reimbursements. \*\*The Gulf Coast Region is defined as Austin, Brazoria, Chambers, Colorado, Fort Bend, Galveston, Harris, Liberty, Matagorda, Montgomery, Walker, Waller, and Wharton Counties.