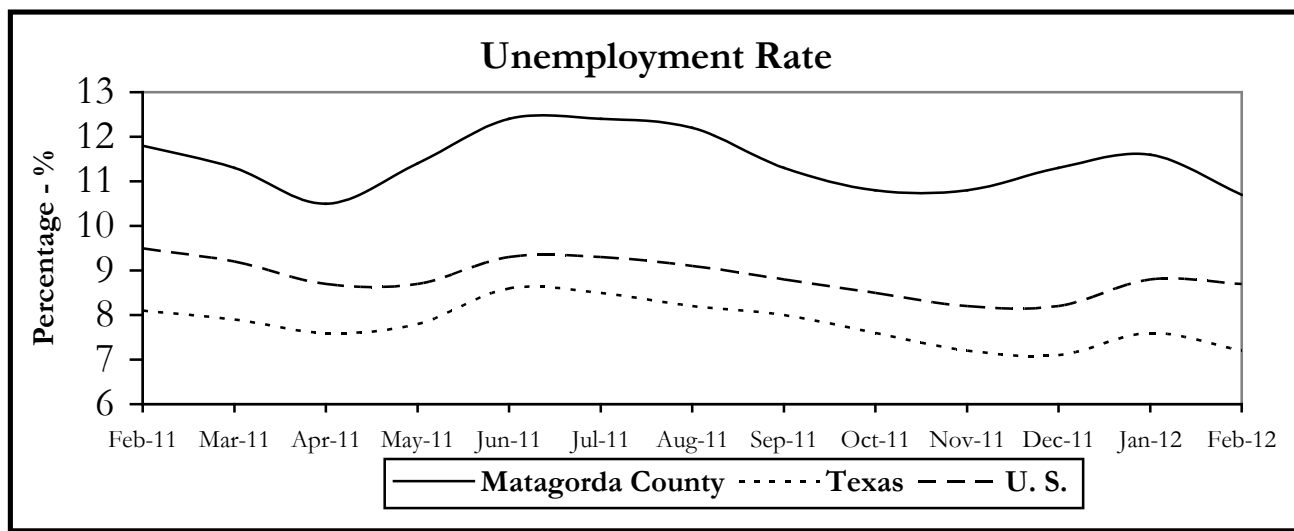


## 3<sup>rd</sup> Quarter 2011 Data

The rate of unemployment in Matagorda County dropped nine-tenths of a percentage point to 10.7 percent in February 2012, down from a peak of 12.4 percent in July 2011. The unemployment rate was higher than the state's 7.2 percent rate and the nation's 8.7 percent rate. Total covered employment in the county was down 403 jobs or 3.7 percent over third quarter 2011. Largest declines were in Professional & Business Services, down 187 jobs or 25.9 percent, and Local Government, down 213 jobs or 8.8 percent. Total covered employment in the county was down 462 jobs or 4.3 percent from third quarter 2010 with losses widespread across most industries. Largest private sector losses were in Trade Transportation & Utilities, down 137 jobs or 4.2 percent, and Professional & Business Services, down 175 jobs or 24.6 percent. In the public sector, Local Government was down 111 jobs or 4.8 percent due to budget shortfalls. See page 2 for the detailed data.

	FEB 2012	JAN 2012	FEB 2011
<b>Civilian Labor Force</b>	17,644	17,598	18,251
<b>Total Employment</b>	15,755	15,558	16,103
<b>Unemployed</b>	1,889	2,040	2,148
<b>Unemployment Rate</b>	10.7%	11.6%	11.8%
<b>Comparative Actual Rates</b>			
<b>Texas</b>	7.2%	7.6%	8.1%
<b>U.S.</b>	8.7%	8.8%	9.5%



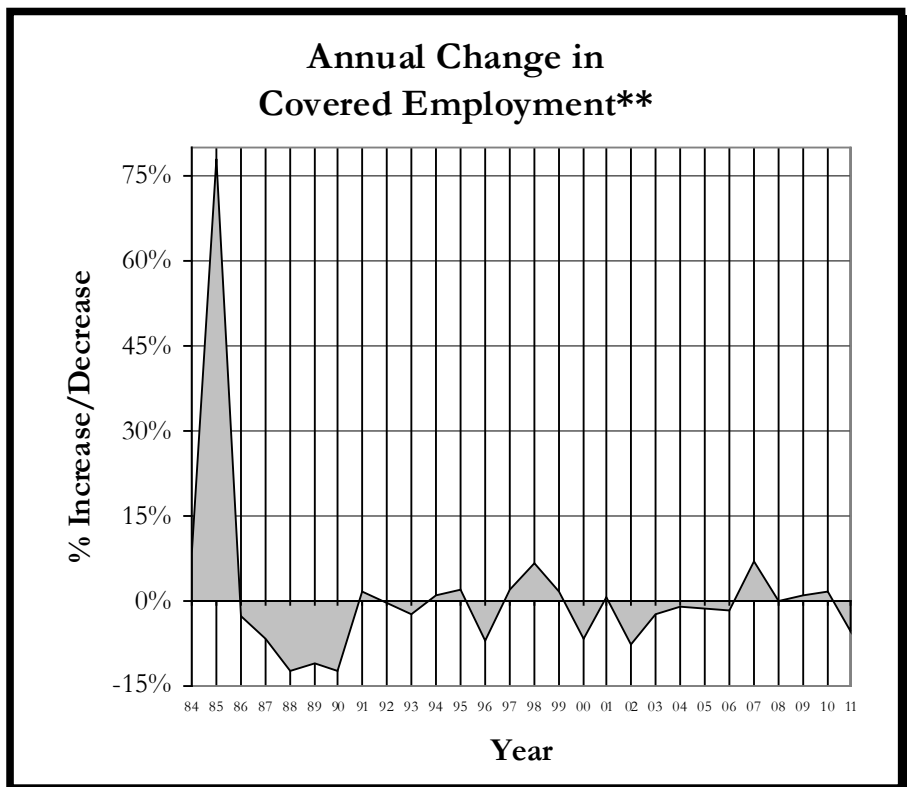
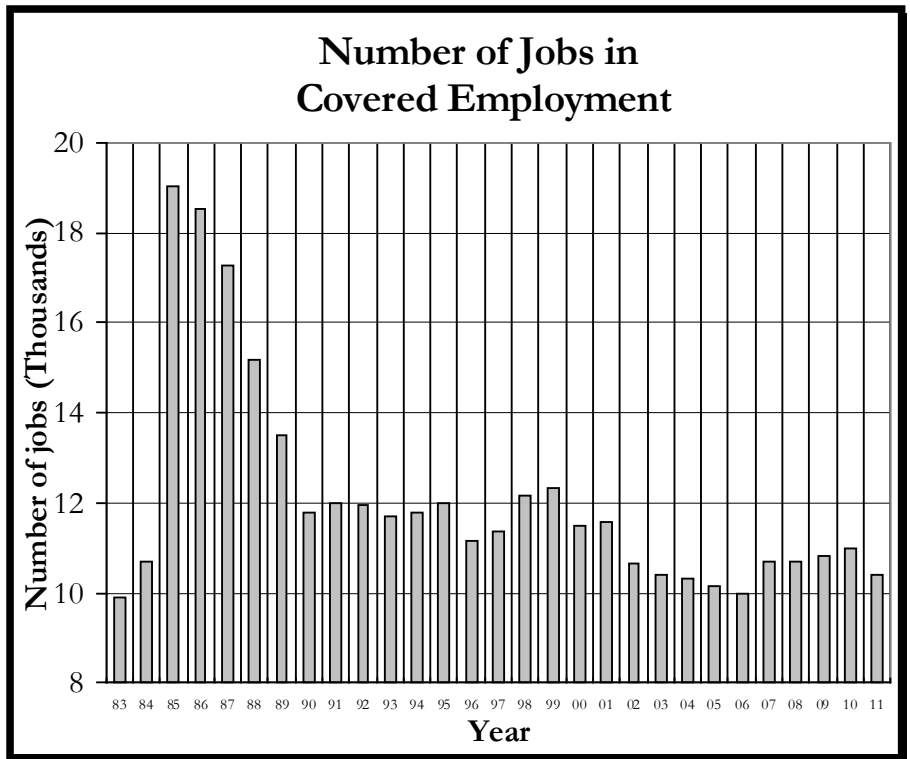
Estimates reflect actual (not seasonal adjusted) data. Civilian Labor Force includes wage and salary workers, self-employed, unpaid family, domestics in private households, agricultural workers, workers involved in labor disputes and the unemployed, all by place of residence. Source: Texas Workforce Commission in cooperation with the U.S. Department of Labor, Bureau of Labor Statistics. All Data Subject To Revision.

COVERED EMPLOYMENT	Number of Jobs			Quarter Chg.		Annual Chg		Avg Wkly Wage*
	3RD QTR 2011	2ND QTR 2011	3RD QTR 2010	Actual	%	Actual	%	
<b>Total Employment</b>	10,366	10,769	10,828	-403	-3.7%	-462	-4.3%	\$872
<b>Natural Resources &amp; Mining</b>	743	671	746	72	10.7%	-3	-0.4%	\$815
<b>Construction</b>	292	326	328	-34	-10.4%	-36	-11.0%	\$864
<b>Manufacturing</b>	476	477	446	-1	-0.2%	30	6.7%	\$1,093
<b>Trade, Transportation, &amp; Utilities</b>	3,091	3,075	3,228	16	0.5%	-137	-4.2%	\$1,368
<b>Information</b>	60	66	65	-6	-9.1%	-5	-7.7%	\$589
<b>Financial Activities</b>	370	372	364	-2	-0.5%	6	1.6%	\$861
<b>Professional &amp; Business Services</b>	535	722	710	-187	-25.9%	-175	-24.6%	\$747
<b>Education &amp; Health Services</b>	991	1,004	958	-13	-1.3%	33	3.4%	\$557
<b>Leisure &amp; Hospitality</b>	1,038	1,045	1,075	-7	-0.7%	-37	-3.4%	\$250
<b>Other Services</b>	385	409	400	-24	-5.9%	-15	-3.8%	\$854
<b>Nonclassifiable</b>	2	3	9	-1	NA	-7	na	na
<b>Public Administration</b>	2,377	2,595	2,496	-218	-8.4%	-119	-4.8%	\$647
<b>Federal Government</b>	83	86	85	-3	-3.5%	-2	-2.4%	\$907
<b>State Government</b>	97	99	103	-2	-2.0%	-6	-5.8%	\$797
<b>Local Government</b>	2,197	2,410	2,308	-213	-8.8%	-111	-4.8%	\$631

\*Wages compiled from 1st quarter 2011 contribution and wage reports submitted to the Texas Workforce Commission by employers subject to the Texas Unemployment Compensation Act. Data source: the Texas Workforce Commission, Labor Market and Career Information Department in cooperation with the Bureau of Labor Statistics, U.S. Department of Labor.

## Matagorda County 1983-2011 Covered Employment\*\*

YEAR	JOB	+ / (-)	% +/-
83	9,889		
84	10,696	807	8.2%
85	19,040	8,344	78.0%
86	18,506	(534)	-2.8%
87	17,283	(1,223)	-6.6%
88	15,183	(2,100)	-12.2%
89	13,499	(1,684)	-11.1%
90	11,806	(1,693)	-12.5%
91	12,000	194	1.6%
92	11,952	(48)	-0.4%
93	11,692	(260)	-2.2%
94	11,798	106	0.9%
95	12,008	210	1.8%
96	11,172	(836)	-7.0%
97	11,384	212	1.9%
98	12,151	767	6.7%
99	12,332	181	1.5%
00	11,500	(832)	-6.7%
01	11,557	57	0.5%
02	10,652	(905)	-7.8%
03	10,420	(232)	-2.2%
04	10,318	(102)	-1.0%
05	10,170	(148)	-1.4%
06	10,007	(163)	-1.6%
07	10,696	689	6.9%
08	10,709	13	0.1%
09	10,815	106	1.0%
10	11,004	189	1.7%
11	10,404	(600)	-5.5%



\*\*Data Compiled from 1st quarter contribution and wage reports submitted to the Texas Workforce Commission by employers subject to the Texas Unemployment Compensation Act. For more information on your particular industry, please call 832/681-2535. Data source: the Texas Workforce Commission, Labor Market and Career Information Department in cooperation with the Bureau of Labor Statistics, U.S. Department of Labor.

### Gulf Coast\*\* 2010 Wages Released July 2011, next update August 2012\*

Std. Occ Code	Occupation	Average Wage	Employment
13-2011	Accountants & Auditors	34.46	22,820
49-3023	Automotive Service Technicians and Mechanics	18.72	9,970
43-3031	Bookkeepers, Acctg and Auditing Clerks	17.65	31,290
49-3031	Bus and Truck Mechanics and Diesel Engine Specialists	19.74	4,630
53-3022	Bus Drivers, School	12.34	9,270
47-2031	Carpenters	16.57	8,810
41-2011	Cashiers	9.12	63,410
17-2051	Civil Engineer	49.61	10,230
15-1051	Computer Systems Analyst	41.31	11,980
47-2061	Construction Laborers	12.05	29,590
35-2012	Cooks, Institution and Cafeteria	10.41	8,590
35-2014	Cooks, Restaurant	9.08	17,480
43-4051	Customer Service Representatives	14.77	48,520
43-9021	Data Entry Keyers	13.35	4,770
47-2111	Electricians	22.11	13,360
43-6011	Executive Secretaries and Administrative Assistants	22.72	25,820
47-1011	First-Line Supervisors/Managers of Construction Trades and Extraction Workers	29.41	16,690
43-1011	First-Line Supervisors/Managers of Office and Administrative Support Workers	26.31	29,120
41-1011	First-Line Supervisors/Managers of Retail Sales Workers	19.66	24,140
35-2021	Food Preparation Workers	9.85	9,090
11-9051	Food Service Managers	27.91	4,090
11-1021	General and Operations Managers	57.22	43,650
49-9041	Industrial Machinery Mechanics	24.13	11,730
53-7051	Industrial Truck and Tractor Operator	13.80	9,870
37-2011	Janitors and Cleaners, Except Maids and Housekeeping Cleaners	10.06	41,000
53-7062	Laborers and Freight Stock, and Material Movers, Hand	12.55	43,070
29-2061	Licensed Practical and Licensed Vocational Nurses	20.76	12,860
11-9081	Lodging Managers	26.89	270
51-4041	Machinists	18.91	12,580
49-9042	Maintenance and Repair Workers, General	16.43	24,610
11-2021	Marketing Managers	63.81	2,660
31-1012	Nursing Aides, Orderlies, and Attendants	11.00	20,260
43-9061	Office Clerks, General	14.18	60,730
29-1051	Pharmacists	51.30	5,600
47-2152	Plumbers, Pipefitters, and Steamfitters	22.46	8,960
33-3051	Police and Sherriff's Patrol Officers	25.46	14,800
13-1023	Purchasing Agents, Except Wholesale, Retail, and Farm Products	30.12	7,010
43-4171	Receptionists and Information Clerks	12.58	15,320
29-1111	Registered Nurses	34.40	42,840
41-2031	Retail Salespersons	11.21	83,710
41-4011	Sales Representatives, Wholesale and Manufacturing, Technical and Scientific Products	38.59	7,900
43-6014	Secretaries, Except Legal, Medical, and Executive	14.77	36,780
33-9032	Security Guards	10.63	22,700
43-5071	Shipping, Receiving, and Traffic Clerks	14.02	14,670
43-5081	Stock Clerks and Order Fillers	11.37	29,740
53-3032	Truck Drivers, Heavy an Tractor-Trailer	18.23	27,800
53-3033	Truck Drivers, Light or Delivery Services	16.27	13,370
51-4121	Welders, Cutters, Solderers, and Brazers	18.78	15,730

\*Data compiled by the Texas Workforce Commission, LMCI Dept. in cooperation with the Bureau of Labor Statistics as part of the Occupational Employment Survey. Employment is the estimate of employment based upon the sample, not the sample employment. Wages for the OES survey are straight-time, gross pay, exclusive of premium pay. Base rate, cost-of-living allowances, guaranteed pay, hazardous-duty pay, incentive pay including commissions and production bonuses, tips, and on-call pay are included. Excluded are back pay, jury duty pay, overtime pay, severance pay, shift differentials, nonproduction bonuses, employer cost of supplementary benefits, and tuition reimbursements. \*\*The Gulf Coast Region is defined as Austin, Brazoria, Chambers, Colorado, Fort Bend, Galveston, Harris, Liberty, Matagorda, Montgomery, Walker, Waller, and Wharton Counties.