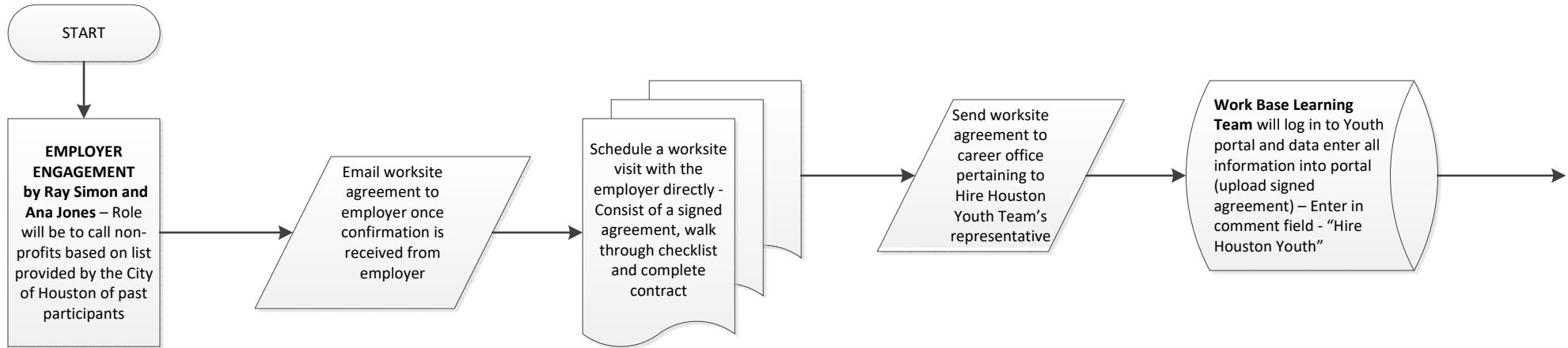


Employer Engagement Process



Hire Houston Youth Team – Assessment, Eligibility, and Placement

- A) Interfaith** – Anthony Wallace
Misty Cornelius
Anita Phipps
Natasha Jackson
- Baker Ripley** – Susie Banks
Yoshekia White
Jenee Washington
- Eqquis** – Natasha Tyler + 1

- B) Support Center**
(TBD)

- C) Work Base Learning**
Baker Ripley - Negail Dixon
Eqquis - Kaymondria White
Interfaith - Amber Gauff

